



# OWNER'S GUIDE V2

*BY THE HUMAN SOFTWARE COMPANY INC. © 1991-2005*

© 1991-2005 by The Human Software Company Inc. All rights reserved.

The Human Software PhotoFixLens software application and this manual are subject to the software license agreement terms. The information in this manual is subject to change without notice. The Human Software Company Inc. assumes no responsibility or liability for any errors or inaccuracies that may appear in this manual.

This manual may not, in whole or in part, be reproduced, stored in a retrieval system, copied, photocopied, translated, transmitted by any means, converted to any electronic or machine-readable form without prior written permission of The Human Software Company Inc.

All images used in this manual are protected under copyrights law.

The pictures and photos in this manual may not, in whole or in part, and by any means be reproduced or transmitted without written permission of their respective author.

ClassicFrames, AutoCorrect, MagicStyles, PhotoWeave, PhotoSpa, ColorExtreme, CD-Q, Textissimo, Select, Auto-Mask, Squizz!, PhotoSurface, PhotoLight, ColorTouch, The Human Software Company and their logos are trademarks of The Human Software Company Inc. Adobe Photoshop, Adobe Illustrator are trademarks, Adobe and PostScript are registered trademarks of Adobe Systems Incorporated. Macintosh, PICT and Apple are registered trademarks of Apple Computer Inc. QuarkXPress, X-Tension are registered trademarks of Quark, Inc. Kodak and PhotoCD are registered trademarks of Eastman Kodak Company. Freehand is a registered trademark of Macromedia Inc.

All other products or name brands are trademarks of their respective holders. Human Software makes no claim to any such marks, nor willingly or knowingly misused or misapplied such marks.

---

Printed in the USA  
© 1991-2005 The Human Software Company Inc.

P.O Box 16  
Wrightsville Beach NC 28480 USA  
WEBSITE [WWW.HUMANSOFTWARE.COM](http://WWW.HUMANSOFTWARE.COM)

---

**HUMANSOFT PHOTOFIXLENS OWNER'S GUIDE**

## Human Software Company HumanSoft PhotoFixLens Software End-User Licensing & Limited Warranty Agreement

**IMPORTANT THE FOLLOWING IS A LEGAL AGREEMENT BETWEEN YOU AND HUMAN SOFTWARE CO INC.** READ THE TERMS AND CONDITIONS OF THIS LICENSE AGREEMENT CAREFULLY BEFORE USING THE APPLICATION, THE ASSOCIATED FILES ( " THE SOFTWARE" ) AND ITS CONTENTS. THE LICENSE AGREEMENT SETS FORTH THE TERMS AND CONDITIONS OF THE LICENSE AND THE LIMITED WARRANTY AGREEMENT FOR THE HUMAN SOFTWARE COMPANY SOFTWARE APPLICATIONS AND IT SUPERSEDES ANY PRIOR PROPOSAL, REPRESENTATION OR UNDERSTANDING BETWEEN THE PARTIES. ("THE SOFTWARE" ) IS LICENSED NOT SOLD. BY CLICKING ON THE START BUTTON AND SERIALIZING, YOU ARE ACCEPTING AND AGREEING TO BE BOUND BY THE TERMS OF THIS LICENSE. IF YOU DO NOT WISH TO BE BOUND TO THE TERMS AND CONDITIONS OF THIS LICENSE, YOU SHOULD RETURN IMMEDIATELY THE PACKAGE UNOPENED, WITH YOUR PROOF OF PURCHASE TO THE PLACE WHERE YOU OBTAINED IT AND, IF THE DISK POCKET IS NOT OPENED, YOU WILL RECEIVE A REFUND OF THE PRICE OF THE SOFTWARE, SHIPPING IS NOT REFUNDABLE- HUMAN SOFTWARE RESERVES THE RIGHT TO CHARGE A \$10 RESTOCKING FEE FOR EACH RETURNED PACKAGE).

1. License Grant : The Human Software Company Inc. hereby grants you, and you accept, a non-exclusive license to use this copy of the Human Software Program and associated files and the computer software contained therein in Object-code-only form (" the software"), and the accompanying Documentation on the following terms. "The Software " shall mean the software programs and associated files contained in this package or upgrades or back-up copies of these programs and associated files. You may use "the Software" only on a single computer owned, leased or otherwise controlled by you. In the event of inoperability of that computer on a back-up computer chosen by you. Each computer is required to have its own copy of the software. The Software may not be pooled or shared among and between multiple users through networking or other communication packages, without the previous written consent of the licensor and the payment of additional licensing fees. After loading the software into your computer, You may make a back-up copy of the Software in machine-readable form You must reproduce on any such copy of the program or the documentation the licensor's copyright notice and any propriety legends that were on the original copy of the Software. Except as authorized in this paragraph, no copies of the program or any portion of the software may be made by you or any person under your authority or control. You acknowledge that the software is copyright protected, and that improper use of your hardware may alt your software and inhibit its use. You agree that if you get yourself registered by returning the registration card, that in case of involuntary damage occurring to the CD (wear & tear), the Licensor will exchange the CD (shipment cost will remain at your charge). In any case, the damaged CD must be returned to the Human Software Company within 10 days of the exchange. Exchange will be denied if you terminate the license by destroying the CD or the information present on the CD. In case of repetitive exchange, the Licensor has the right to refuse a CD replacement or exchange. You agree that you will not try or participate in an action which will try to break this protection. You agree that you will not assign, sublease, transfer, lease, rent or share the Software, the backup copy of the Software, and the related documentation. You agree to tell or communicate the restrictions contained in this license agreement to all persons under his or her employment direction or control. You agree to notify the licensor in writing of any unauthorized use and infringement on the Licensor's rights.
2. Licensor's Proprietary Rights : The Software, its structure and organization contain copyrighted material, trade secrets, and other proprietary information licensed to you by the licensor on a non-exclusive basis and protected under the US copyrights laws and international treaty provisions and trade secret laws of general applicability. You may not export or re-export directly or indirectly the Software in contravention of the laws and regulations of the United States or as appropriate other foreign jurisdictions.
3. All the material in this program disk is copyrighted and proprietary. All rights, including all copyrights, to this material are owned and reserved by The Licensor except to the extent that the right to use such material is specifically granted by this license. By this agreement, the Licensor grant you a non-exclusive, non-transferable right to use the images in this disk in live presentations and printed materials created by you for your own use or for use by

your direct client : articles, advertisements in magazines and newspapers, displays, brochures, reports, and newsletters. Call us with questions about a not-listed proposed use.

4. YOU MAY NOT A/Make or allow anyone else to make any form of copy whether digital, electronic, printed, or otherwise of any of the images contained in this disk except insofar as such images may be incorporated into the above stated Authorized printed materials. B/ Place or allow anyone else to place any of the images in this disk on any electronic bulletin board or other form of on-line services

C/Use or allow anyone else to use any of the images in this disk in any form of obscene pornographic or in any other way defamatory of any person or business entity in any such image or which implies any form of endorsement by Human Software or by any of the Photographers. D/ You agree to indemnify and hold harmless Human Software against any damages or liability of any kind arising from any use of this product other than the authorized uses specified in this agreement. All images must be credited : Human Software ©1999 You further agree not to translate, decompile, reverse engineer, disassemble the software in whole or in part or otherwise reduce the Software to a human-perceivable form. You acknowledge and agree that all right, title and interest in and to the software are and shall remain with licensor. You may not modify, network, rent, lease, loan, sell, distribute or create derivative works based upon the Software in whole or part.

5. No other rights : This license agreement grants you only a limited right of use revocable in accordance with the terms of this agreement. The Licensor retains title and ownership of the software, the media on which it is recorded, and all copies of the software whatever the form or media in and on which the software and other copies may exist. Except as stated above, this agreement does not grant you any rights to copyrights, trade secrets, trademarks or any other intellectual property rights in respect to the software and the accompanying documentation.

6. Term : This license is effective upon starting 'the software' and shall continue until terminated. You may terminate this License at any time by destroying the Software and all copies thereof. The Licensor has the right to terminate your license if you fail to comply with any term of this License. Upon termination you must destroy the Software and all copies thereof. Termination of license will not entitle the licensee to repayment, wholly or partially, of the license fee.

7. This disk and the photographic material contained on this disk are provided "AS IS". Human Software makes no warranty, either express or implied of merchantability fitness for any particular use type or quality of image or compatibility with any computer or other kind of equipment. Neither Human Software nor any of its employees and employees, and agents shall be liable for any damages, direct or indirect consequential or incidental arising out of the use of the disk and the Software. Because some states do not permit the limitation of consequential or incidental damages the above limitation of liability may not apply in its entirety to some purchasers. The licensor warrants to the licensee that the disk on which the Software is recorded shall be free from defects in material and workmanship under normal use for a period of ninety (90) days from the date of delivery (referred as the Limited Warranty Period) as evidenced by a copy of your receipt. The Licensor further warrants that, during the Limited Warranty Period, the software shall substantially operate in accordance with the specifications given in the accompanying documentation. You must report all defects, and return the software to the place where you obtained it with a receipt within the Warranty Period to be eligible for Warranty service. If the Software fails to comply with this warranty, the Licensor will, at its option and cost, either provide all corrections required for such reported errors, replace the Software or refund the license fee for the software. You agree that the foregoing constitutes your sole and exclusive remedy for breach by licensor of any warranties made under this agreement. The licensor will have no responsibility to replace a disk damaged by accident, abuse or misapplication.

Any implied warranties on the disks, including any implied warranties of merchantability and fitness for a particular purpose, are limited in duration to ninety (90) days from the date of delivery.

8. This agreement shall be governed by the laws of the State of California. Venue for any action regarding this product or this agreement shall be Santa Clara County, California. If any portion of this agreement shall be found to be invalid by a court of competent jurisdiction, the remainder of the agreement shall remain in full force and effect and shall be construed so as to achieve the original intention of the agreement.

---

## TABLE OF CONTENTS ...

INTRODUCTION .....	7
Human Software Product Line .....	7
About this manual .....	7
INSTALLATION .....	8
Product Checklist, Registration .....	8
Hardware Requirements .....	8
Plug-In Filter.....	8
LENS DISTORTION .....	10
STARTING PHOTOFixLENS .....	10
MAIN DIALOG WINDOW .....	11
CURVATURE CORRECTION .....	12
TROUBLE SHOOTING .....	13

---

#### HUMANSOFT PHOTOFIXLENS *works as a Photoshop filter Plug-In...*

HUMANSOFT PHOTOFIXLENS is available and working as a RGB plug-in filter for Adobe Photoshop™ Adobe Elements, Jasc Paintshop or any application supporting Adobe Photoshop plug-in filter specifications. HUMANSOFT PHOTOFIXLENS 2 works with Windows 2000/NT/XP

HUMANSOFT PHOTOFIXLENS capabilities are described in this Manual.

#### ***The Human Software Product line***

Human Software offers you a full family of plug-ins & applications tuned for a lot of your designing and prepress needs; Please read our catalog enclosed for details or give us a call, or check out our web site at [www.humansoftware.com](http://www.humansoftware.com).

#### **Human Software Plug-Ins**

-**SQUIZZ!** Rgb/Cmyk plug-in filter : Just brush for outrageous image distortion.. a Grid for precise distort, you may want also to build Quicktime movies directly inside Photoshop....

-**PhotoSpray!** Rgb plug-in filter : Just brush and you have a natural brush to add any kind of leaves, flowers, trees... A beautiful way to finish a job.

-**Textissimo** Rgb plug-in filter : You have more than 700 Text effects, tune your channels and your action to your heart desires.

-**PhotoSurface** to add natural media to all Your Images...

-**AutoMask** lets you build new alpha stencils, clipping paths.. Available as a plug-in acquire for Photoshop, Illustrator, or XPress for Masking...

-**AutoCorrect** to enhance in just one click all your images...

-**XFile** for advanced Image resizing...

-**Select** plug-in filter lets you apply high-end RGB/CMYK Color Correction without masking and offers sophisticated color editing features such as the Gradation and the unique Selective color correction on up to 24 channels

-**ClassicFrames** plug-in filter that will add beautiful classic frames..wood/gold..etc...

## INSTALLING...

*To install successfully PHOTOFIXLENS on your Windows system, follow carefully these steps and the instructions appearing on your screen.*

From your CD-ROM or download

- 1- UnZip and launch the Install PhotoFixLens
- 2- Select the location of your 'plug-ins/filter' folder of your Photoshop (or other host application)
- 3- Start Photoshop, open an RGB image, go down the Filter Menu (Filters>HumanSoft>PhotoFixLens) and launch it.
- 4- Click on Start, the first time, you will be asked to enter your serial number... If you have purchased your license you do not need to call us, simply click on 'Start' and enter name/company/serial number (case sensitive!) provided on your jewel box or via e-mail. Click OK.

The installation of your PHOTOFIXLENS plug-in is completed.

### **Installation Troubleshooting...**

1/ You do not see PHOTOFIXLENS in your filter list : PHOTOFIXLENS has not been installed in the plug-in folder recognized by Photoshop (or your host application), make sure of the location of your plug-in folder and reinstall.

<To check the location of your plug-in folder inside Photoshop. Launch Photoshop, go to the File menubar/Preferences, you will see Plug-Ins&Scratch Disk... then you will see the correct path of the Photoshop plug-in folder>

*Only one copy of the program PHOTOFIXLENS is authorized for one single CPU. For more licenses, contact us about getting multiple licenses.*

### **Hardware Requirements**

To work with HUMANSOFT PHOTOFIXLENS, you need the same hardware as the one you currently use with Adobe Photoshop 5.5/6/7/CS, Elements 2/3, PaintShop, Microsoft DigitalPro.

### **HumanSoft PhotoFixLens a Photoshop plug-in filter**

In order for HumanSoft PhotoFixLens plug-in filter to appear in the Filter Menu you need:

- 1/ To install HumanSoft PhotoFixLens (see how to install)
- 2/ Relaunch Photoshop and access the Filter/HumanSoftware list, launch HumanSoft PhotoFixLens
- 3/ Start and register your plug-in

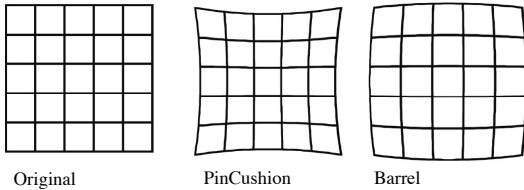
HumanSoft PhotoFixLens effects may be applied on any selected part of an RGB image, the filter will run on a masked image.



### PinCushion and Barrel Distortions

Barrel distortion is associated with wide angle (or minimal zoom) lenses and it causes the images to appear spherical (curved outward). You can notice this when you have straight edge near the side of the image.

As opposite the Pincushion distortion is associated with Telephoto lenses (or maximum zoom) and the images appear pinched (bent inward) toward the center. The Pincushion is often less noticeable than barrel. Most digital and compact film cameras suffer from this type of distortions especially if it has a wide-angle lens. Most consumer digital cameras have unacceptable lens distortions, effect which shows disturbingly on architectural and similar shots. These unwanted distortion into your photo can easily be remove digitally.



Original

PinCushion

Barrel

### Eliminating Wide-Angle Distortion

This unwanted bending is called barrel distortion. A wide-angle lens distorts the image by curving straight lines. You can end up with a picture that doesn't look quite right because the walls of the room are warped like the reflection in a funhouse mirror. All wide-angle lenses create some amount of barrel distortion, though the effect can vary depending upon the lens. The wider the lens, the more pronounced the effect will usually be. A fisheye lens, in fact, is just a super-wide-angle lens that has the ultimate in barrel distortion. With PhotoFixLens you can set up a corrective lens that you will be able to apply over and over again on different images.

### Eliminating Vignetting

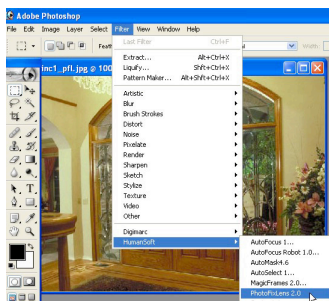
On the edge of the lens, chromatic aberration might occur that would darken the outer edge of the picture. PhotoFixLens gives you 4 set of adjustments in the RGB space that can increase the brightness and correct the effect.

### Eliminating Fringe

This is also called purple effect. A purple fringe effect produces garishly coloured edges to subject placed against high-contrast backgrounds. This is a combination of chromatic aberration, where the lens fails to converge all wavelengths of light at a single point, and blooming, where the light-sensitive elements on the sensor are overloaded. The result is coloured fringe in high contrast areas, which may be green or red, but most commonly a pinky purple. While some cameras suffer less, all are susceptible to a degree. PhotoFixlens fringe adjustment will reduce the effect.

**STARTING...****Launch HUMANSOFT PHOTOFIXLENS ...**

- 1- Launch your Adobe Photoshop
- 2- Open an RGB image, go to Filter>HumanSoft>PhotoFixLens

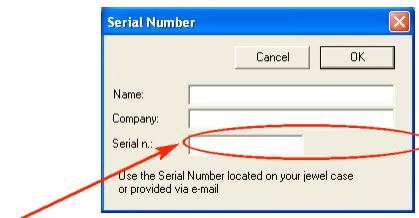


- 3- Click on 'Start & Register', the first time, you will be asked to enter your serial number... If you have purchased your license you do not need



to call us, simply click on 'Start' and enter name/company/serial number (case sensitive!) provided on your jewel box or with the e-mail in case of a download

4. Next, enter your name, company name and the PHOTOFixLENS Serial Number that is on the jewel box or you got via e-mail Click OK to validate entry.

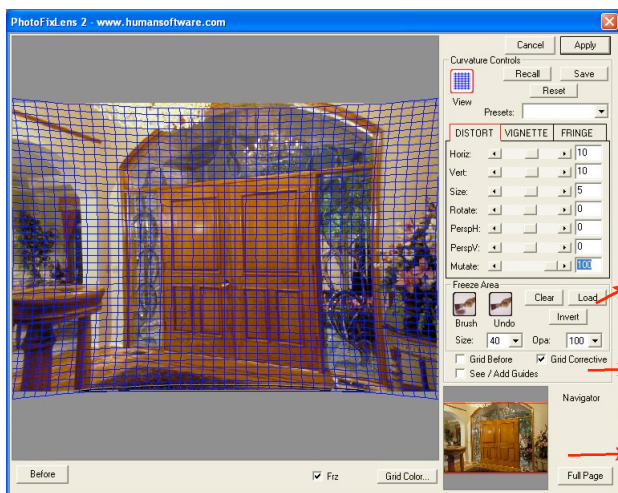


5. The installation is now complete. You should see now PhotoFixLens main menu panel...

**START PHOTOFixLENS**

## MAIN DIALOG...

As soon as you have personalized your HUMANSOFT PHOTOFIX-LENS, you get the Main Dialog Box :



**RGB** Color/Coordinates readings(before and after values)

**Apply** Will Apply the corrective lens and return to your host application

**Cancel** Return to the host, no validation

**Before/After** See Before/After Distortion

**Save/Recall** Save or Recall a corrective lens.

Save inside the 'lenses' folder that is within the 'PhotoFixLens\_US\_PIN' folder within your plug-in folder. The next time you launch PhotoFixLens you will be able to load it from the Presets popup .

### Curvature Controls

Adjust Distortion/Vignetting and Fringing, see next page for details

**Freeze Area.** Brush to define an area where you do not want any distortion to occur. With Load you can Load an image or another Layer as a stencil.

**Grid Before/Corrective** Show a Grid before lens correction and/or after

**Click to add Guides** TheHorizontal/Vertical Cross is a guideline to check horizontal/vertical lines, click again the intersection to suppress the guide

**Navigator,** simply drag the sub rectangle or resize a corner to pan and zoom on your Image. Click on Full Page, to see the Full Image again.

Curvature Controls...

You have 3 sets of controls...



Correct Distortion

**Horizontal/Vertical** A value between -100 and 100 changes the curvature of the corrective lens

**Size** To enlarge the corrective lens

**Rotate** Rotate the corrective Lens

**PerspH** Give a Perspective effect horizontally

**PerspV** Give a Perspective effect vertically

**Mutate** Gives extra adjustment to the lens (A mutate of 0 is like showing the before Image)



Correct Vignetting

A value between -100 and 100 changes the brightness independently per channel on the edge of the lens.

Balance from 0 to 100 controls the spread of the vignetting, the higher the value the bigger the spread



Correct Fringe

A value between 80% to 120% to adjust the spacing in between planes

***Q : Where is my serial number?***

A : If you have bought your copy, it is coming with the software (usually it is a sticker on the CD jewel case), or you should have received it within an e-mail (download)

***Q : I try the serial number it is not working?***

A : Where does it come from? make sure the letters are in CAPS mode. (the serial number is case sensitive)

***Q: I have installed it, I cannot see HumanSoftware/HumanSoft PhotoFixLens in the filter list***

A: Make sure you install it in the plug-in folder recognized by your host application, you may have several plug-ins folder. With Photoshop, you can check where is the right one... Launch Photoshop, under the FileMenu/Preferences you will see Plug-Ins and the location of the plug-in folder Photoshop is looking for! We recommend that you use the 'plug-ins' folder that is inside the Photoshop folder

***Q: I have a trial version, i wish to activate it?***

A: Contact us at [sales@humansoftware.com](mailto:sales@humansoftware.com) to buy your license, we will activate your copy.

***Q: I have other technical questions?***

A: Go to our web site [www.humansoftware.com](http://www.humansoftware.com) you have a support web page for all your questions